

Volume

1

ROXBOX VERSION 3.0

RoxBox Karaoke Player

User Manual

ROXBOX KARAOKE PLAYER

User Manual

© RoxBox and Frank H. Crowder
325 Sheri Lane • Hurst, TX 76053
Phone 817-230-4921

Table of Contents

CHAPTER 1 OVERVIEW	1
CHAPTER 2 INSTALLATION	3
RoxBox Karaoke Player Installation	3
RoxBox License Agreement	4
RoxBox Installation Options	4
RoxBox Installation Folder	5
RoxBox First Run	6
RoxBox Karaoke Player Main Screen	7
RoxBox Registration Window	8
RoxBox with information on what you are allowed to do with you copy of RoxBox	8
Upgrades and Updates to the RoxBox Karaoke Player	9
Upgrading your RoxBox	10
CHAPTER 3 ORGANIZING AND IMPORTING YOUR MUSIC	11
File Name Formats and Types	11
Where and How to store your Music	13
Ripping and Converting	15
Importing your Music	15
CHAPTER 4 PLAYING YOUR FIRST SONG	17
Playing the TEST Song.	18
Adjusting the CDG screens.	18
Setting up Dual monitors in windows.	19
What do all of the buttons do?	23
The File Menu	24
The Database Menu	25
The Help Menu	26
Search player 1	27
Que player 1 (or Play list)	28
The Fade Buttons	33
CHAPTER 5 RUNNING A SAMPLE SHOW	34
Basic Karaoke Show.	34
Singer list for your Singers to see and Background Music	35

CHAPTER 6 PROTECTING YOUR MUSIC	36
CHAPTER 7 SONG BOOKS	39
CHAPTER 8 SINGER RECORD	40



Chapter 1 Overview

The RoxBox Karaoke Player (RoxBox) was created for the Karaoke Host by a Karaoke Host. The purpose of this User Manual is to help you find “how to” information about using the RoxBox and related settings. This Manual is in chapters as outlined below with a brief description of what you will find in that chapter followed by Appendixes.

1. This chapter. Gives you an overview of the other chapters in this manual.
2. Installation. Chapter 2 covers the installation of RoxBox., running RoxBox for the first time and the registration of RoxBox with information on what you are allowed to do with you copy of RoxBox.
3. Organizing and Importing your Music. Chapter 3 shows you a few ways to store your Karaoke and DJ music that works well with RoxBox and shows you how to import your songs in to RoxBox.
4. Playing your first song. Chapter 4 shows you how to play the test song or a song that you imported in chapter 3, and how to setup the CDG (lyrics) screens. This only has to be done once. This chapter also includes information about the menu items and the rest of the buttons in RoxBox.
5. Running a sample show. Chapter 5 covers most of the other operations that you will need to know to run a smooth Karaoke Show. This chapter includes the settings needed to use RoxBox for the following type of shows: Section 1) Basic Karaoke Show with no background music or singer list for the singers. Section 2) Add the singer list for your singers to see and adds background music between your singers with auto fade.
6. Protecting your Music. Chapter 6 covers the Encryption of your music files to prevent someone form stealing them and maybe even your show. This chapter explains what happens to the files when encrypted, to show you what level of protection you have when using it. “Warning” RoxBox or Frank H. Crowder or any employee of RoxBox will not decrypt any files encrypted using the Encryption program included with RoxBox for anyone for any reason! In fact, we can not decrypt the files unless they are on the computer that they were encrypted on to start with. If you own the songs, you should have a backup of

them that is NOT encrypted. This is the only way to make sure that someone does not steal your music and then contact RoxBox and claim the songs belong to them. The music is encrypted in a way that if you change the computer or parts of the computer that the songs are encrypted to, your songs will no longer work.

7. Song Books. Chapter 7 WILL have information about creating songbooks with RoxBox. Currently the songbook part of RoxBox is getting an overhaul and will be included when it is completed.
8. Singer Record. Chapter 8 WILL have information about recording your singers. Currently the recording part of RoxBox is getting an overhaul and will be included when it is completed.

Chapter 2 Installation

This Chapter covers the installation of RoxBox, running RoxBox for the first time and the registration of RoxBox with information on what you are allowed to do with your copy of RoxBox.

RoxBox Karaoke Player Installation

You can download the RoxBox Karaoke Player Demo at www.kjamp.com

NOTE: If you are upgrading your copy of RoxBox, Please see section in this manual about 'Upgrading your RoxBox'

The Demo will turn in to the full version of the RoxBox Karaoke Player when you enter your registration information under 'Help', 'Register' after it has been installed. Note: when you enter your Registration information, RoxBox will stay in Demo mode until you close and run it again.

Run the RoxBox Karaoke Player Install, you will see the screen below:



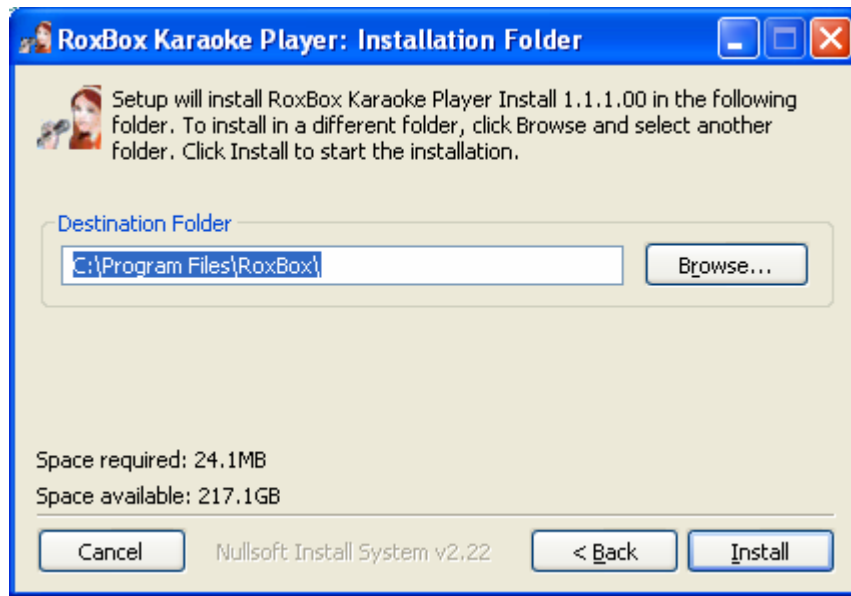
RoxBox License Agreement

Please read the End User License Agreement and select 'I Agree' to continue.

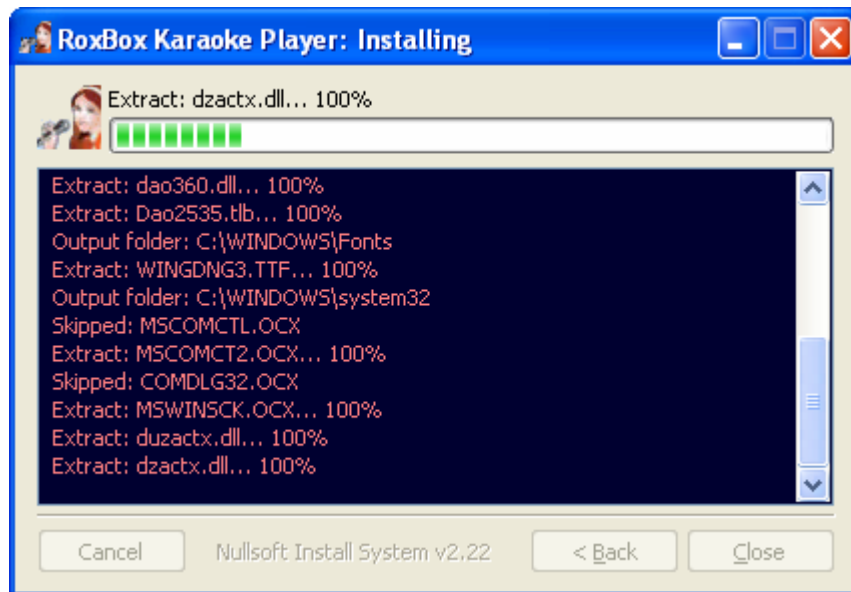


RoxBox Installation Options

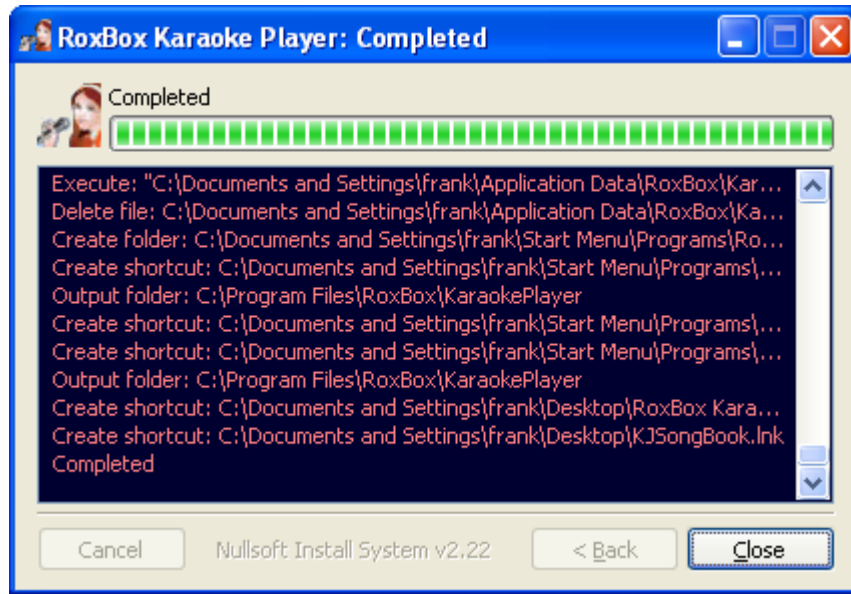
Click 'Next' to install all options. If you are upgrading, you can uncheck all of the items under 'Options'.



RoxBox Installation Folder
Click 'Install' to install in the default location.



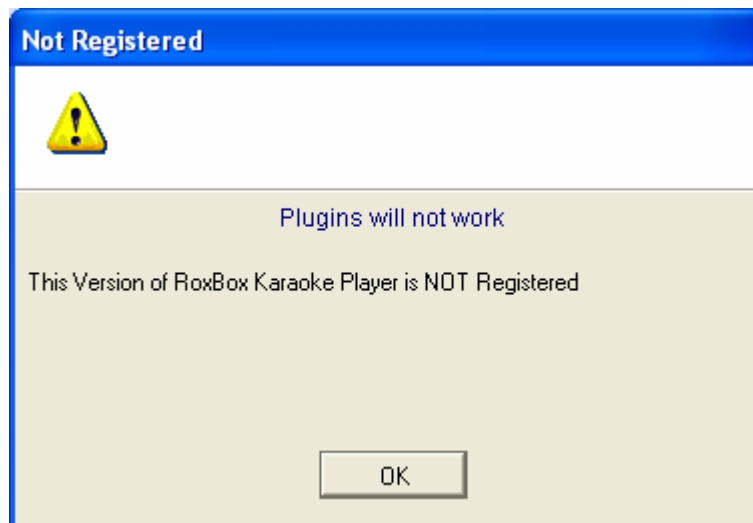
The above screen will show until the installation completes as shown below.



This will bring you to the Completed screen above. Click ‘Close’

RoxBox First Run

The first time you run RoxBox you will see the following screen:



This will show every time you run RoxBox until you enter your registration information. Click ‘OK’ to continue loading RoxBox.

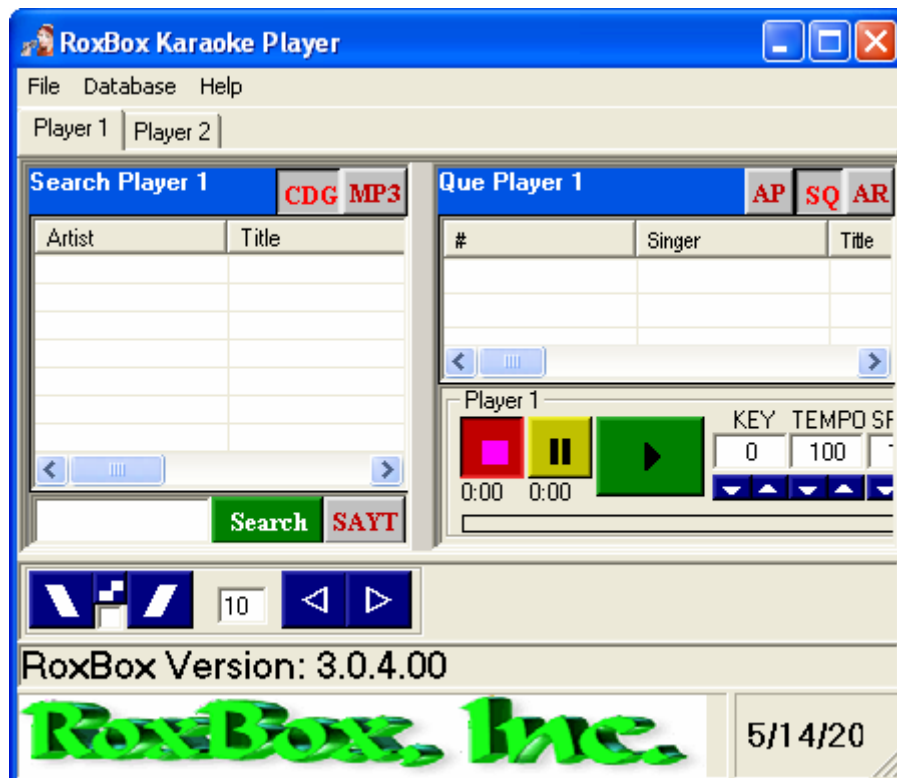
The next screen you will see is the Loading screen:



This screen will change from 'Loading Sound Engine 1' to loading pacemaker and loading sound engine 2 and then pacemaker for engine 2.

You will see two winamps, two pacemakers, two muchfx2s and two MPX windows load during this time.

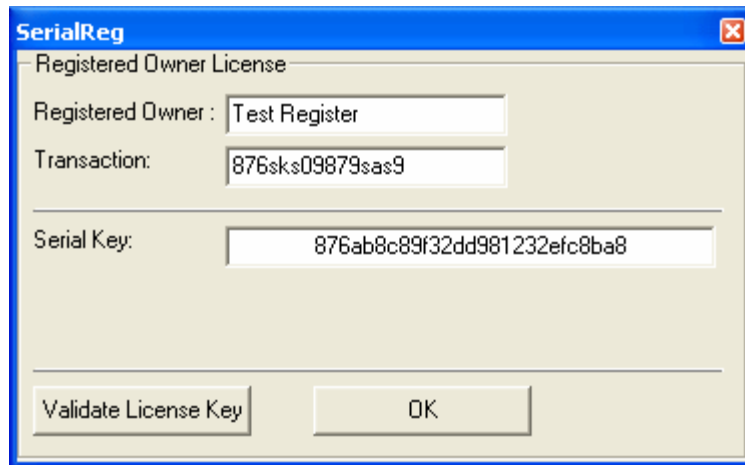
When the loading is done, you should see the Main RoxBox Window:



RoxBox Karaoke Player Main Screen

The above screen has been sized to fit in this document so that you can see most of the window. Your windows should be much bigger.

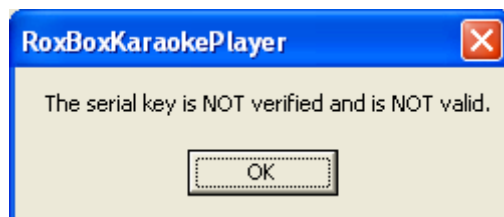
Click on 'Help' and then 'Register'.



RoxBox Registration Window

In this window, enter the information you received in the email or from the website. Please be sure to enter the information just as it is in the email. When done, click on 'Validate License Key' to check that every thing is correct.

If you get a window like this.



Then something is not correct. Click 'OK' and check the information again.

If you get a screen that states that the serial key is verified and fully functional:



Click 'OK' on it and then click 'OK' on the SerialReg screen above. Close RoxBox and run it again to get it to come up in full mode.

RoxBox with information on what you are allowed to do with you copy of RoxBox This is a simple explanation of the EULA and Copyright notice. This explains in simple terms what you can do with your copy of RoxBox..

Currently RoxBox is not locked to your computer. This may change in the future.

1. You may install one copy of RoxBox on a computer for use by you for every registration you own.
2. You may install a second copy of RoxBox on a computer for the purpose of creating a backup computer to your show computer.
3. You may install a copy on you home computer for the purpose of learning, testing or checking RoxBox or for working with your files so that you do not have to haul your show computer in and out all the time.
4. If you have more then one computer that you use for shows, but you never use them both at the same time. (one on Friday and the other on Saturday) then you only need one registration.
5. If you have more then one computer that you use for shows, and you use them at the same time. You need a registration for each one.

Upgrades and Updates to the RoxBox Karaoke Player

Please note that giving your registration information to others will cause your registration to be black listed and it will not work on future upgrades or updates!

If you purchased RoxBox on or before March 25th, 2007, you will have to contact Frank at RoxBox to find out what your upgrade and update policy is. For all others, see below:

Purchase of the KJAMP Karaoke Suite includes all three of the below statements.

Purchase of the RoxBox Karaoke Player gives you one year of free updates and *minor upgrades to the RoxBox Karaoke Player. **Major upgrades at a reduced price.

Purchase of the Super CDG Converter gives you one year of free updates and *minor upgrades to the Super CDG Converter. **Major upgrades at a reduced price.

Purchase of the Rip-n-Zip gives you one year of free updates and *minor upgrades including the song Database. **Major upgrades at a reduced price.

If you have any questions about the Upgrades and Updates policy, please contact frank at RoxBox dot net.

*minor upgrades includes any upgrade that has the same Major version number. EXAMPLE: 4.6.7 would be; Major version 4 and Minor version 6, the 7 is a revision number. Changes to the minor version number would be a minor upgrade.

**Major version changes (4 to a 5 for example) would be a Major upgrade and may have an upgrade fee attached. Major version changes within 60 days of your purchase will be a fee upgrade.

Upgrading your RoxBox

This section covers Upgrading older versions of RoxBox to the Current Version.

First, you need to know what version of RoxBox you have installed on your system. Run RoxBox and look at the lower left of the RoxBox screen, it should tell you the version. If it does not, you can click on the menu item 'Help' and then 'About'. In the About box you should find or see the version number.

VERSIONS BEFORE 2005-12-30 WILL NOT UPGRADE.

Any version before 2005-12-30 can not be upgraded, you will have to uninstall the RoxBox or delete the RoxBox folder in the c:\program files\ folder and install RoxBox following the instruction from the manual as if you are installing it for the first time. NOTE: In version 2005-12-30 and up, the serial number system used by RoxBox changed, if you have a version of RoxBox older then 2005-12-30, you will have to get new keys!

VERSIONS INCLUDING AND BETWEEN 2005-12-30 AND 2006-12-19.

You can keep your database and your playlist, but you need to copy them to a safe place as well as your serial.dat file and remove or delete the karaokeplayer folder in the c:\program files\roxbox\ folder. After installing RoxBox, run RoxBox and select 'file', 'open app data', this will open a folder, close RoxBox and copy the files you saved to this folder. RoxBox and select 'Database', 'Repair' to upgrade your database.

VERSIONS AFTER 2006-12-19.

You can just install over the top of RoxBox un-checking the 'options' part of the install.

Chapter 3 Organizing and Importing your Music

Organizing and Importing your Music. Chapter 3 shows you a few ways to store your Karaoke and DJ music that works well with RoxBox and shows you how to import your songs in to RoxBox.

File Name Formats and Types

For Karaoke song files, most use a very few file name formats, but you may run in to others that are not so widely used. The following is list of the most common order from most used to least used. Note: this is not a complete list and the order may not be 100% accurate.

- a. Disc-Track – Artist – Title
- b. Disc-Track – Title – Artist
- c. Disc-Track Artist – Title
- d. Disc-Track Title – Artist
- e. Artist – Title
- f. Title – Artist

Lest work with a. for this text. You should be able to apply the information for a. to the rest.

Let us break (a.) up in to its parts:

Disc: this is the disc number or code given by someone to the disc that this song was on. For Sound Choice, the disc number will be something like ‘SC7505’. Sound Choice uses 4 digits for most if not all of the CDs that they make. What we do is ad ‘SC’ for Sound Choice and then the four digits to get ‘SC7505’ for the Sound Choice CD number 7505.

Between the Disc and the Track is a single dash ‘-’ with no space before or after.

Track: this is normally a two digit number like ‘01’ or ‘13’.

Between the Track number and the Artist is a space dash space ‘ – ‘.

Artist: this can be one or more artist names separated by just about any thing like a single dash without spaces, the '&' symbol, the '~', just as long as it is not a 'space dash space' or a symbol that widows will not allow in filenames. Some times you will see '(xxx)' in the Artist or Title to show things like (Duet), (live), or other information.

Between the Artist and the Title is a space dash space ' - '.

The Title follows the same as the Artist other then it is the Title.

One Key here is to be consistent when you name your files, follow the same format for all of your songs. When RoxBox imports songs, you have to tell it what the 'format' of the file names are so that it knows what part of the file name is the artist and what part is the title.

Now for the Types of karaoke song files:

- a. MP3+G, the +G stands for Plus Graphics file. So what you get is a MP3 music file and a CDG lyrics file.
 - b. WMA, Windows Media Audio. If you have the +G then you would also have the CDG lyrics file. (WMA+G)
 - c. WAV, this is a Windows Wave Audio file
 - d. BIN, Most of the time, this is a raw dump of a karaoke track for a karaoke CD. A BIN file has both the raw music and the CDG information inter mixed.
 - e. MPG, this is a Mpeg video file. (movie)
 - f. CDG, this file can have more then one type. Some programs and people use CDG to refer to BIN files, and some use it for a lyrics format that they created (CAVS). For the most part, this file is of no use without a Audio file of some kind.
 - g. MCG, (CAVS) own lyrics file format
 - h. NCG, (CAVS) own lyrics file format only this one is encrypted.
 - i. ZIP, This is a compressed file format that compresses other files together to save space on you storage media. Most of the time, this zip file will have in it two files, one Audio file and one lyrics file. The most common is MP3+G.
 - j. KMA, this is a format used by (MTU) and can have just about any format inside.
-

- k. KJA, this is a RoxBox format, it is a zip file as in (i.) above, but it is encrypted to the drive that it is on. (for more information about this format, see later in this manual about protecting your music.)
- l. KJE, this is a RoxBox format, it is a zip file as in (i.) above, but it is encrypted to the computer that it is on. (for more information about this format, see later in this manual about protecting your music.)
- m. Others, many other formats can be used by other programs. But the above seem to be the most common. (a. and i. are the most common among computer based karaoke systems.)

Where and How to store your Music

Most people store the Karaoke music on a USB external hard drive. You can store your music just about anywhere but, I would not put it in any of the Windows folders. (example: Windows, Windows/system32, My Documents, My Music, ...). I would create a folder in the root of the drive your going to put it on called 'Karaoke' for your karaoke and 'MP3' for your DJ music. NOTE: The root folder for the "C" drive would be "C:\".

In the folder Karaoke, I would create other folders too. Like 'S' or 'SC' and put all the songs that the Disc number starts with 'S' or 'SC' in them. This way, you do not end up with a lot of files in any one folder. Windows has a limit to the number of files that can be in any one folder or subfolder and that limit is based on the drive type and format of the drive. For now, think of it as a number around 10,000. the more files you have in a folder or subfolder, the slower windows will be at getting any one file from that folder. So by limiting it to under 1000 per folder or subfolder will increase speed that windows load that file in the player when you play a song.

I use a structure like below:

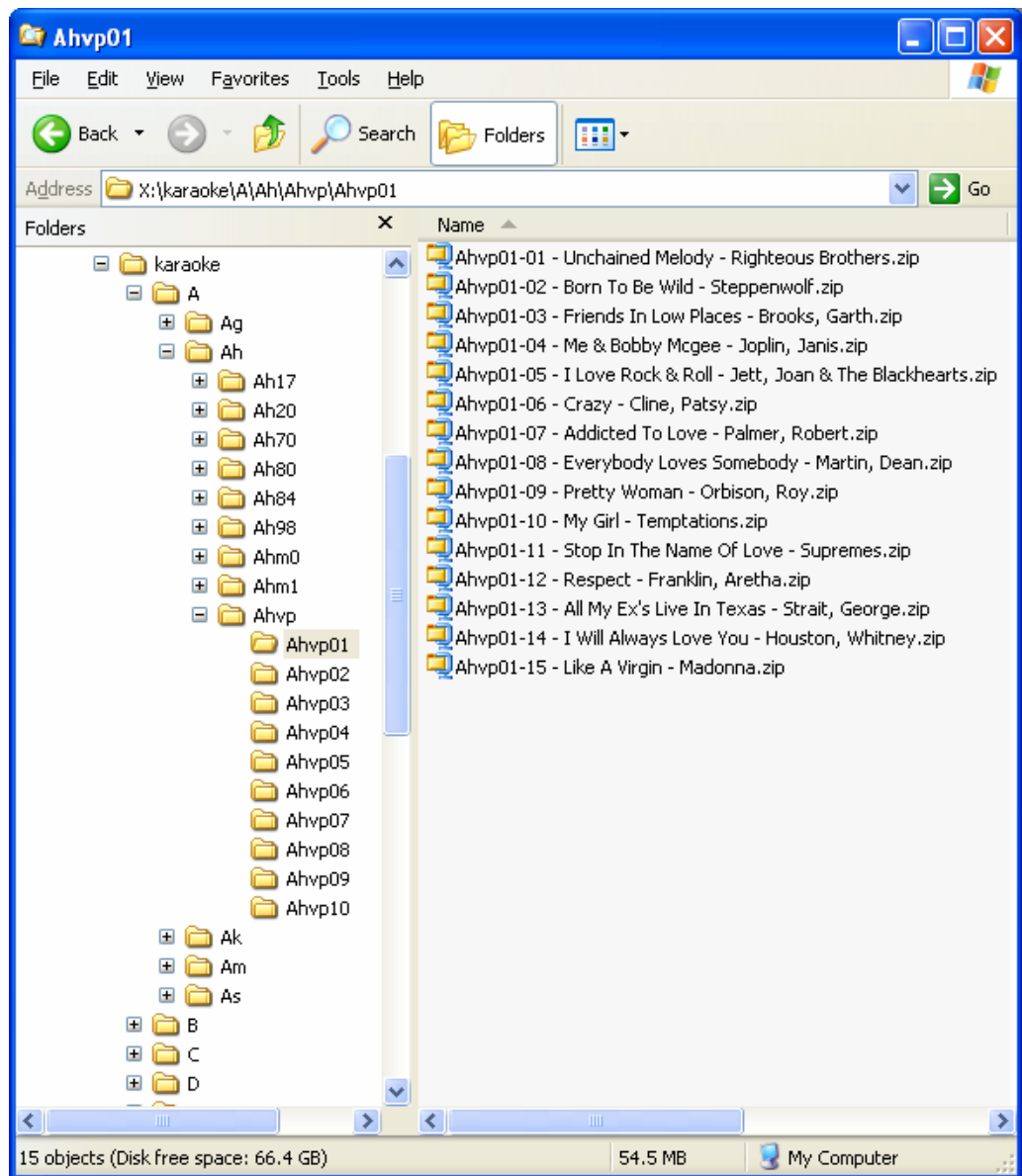
X:\Karaoke\S\SC\SC75\SC7505 (see image below)

In the karaoke folder I have subfolders from A to Z. in the subfolder S, I have subfolders SC for sound choice, SD for star disc, ... in the SC folder I have SC75 that as all of my sound choice songs that have a disc number that starts with SC75, in the SC75, I have one folder for every disc. SC7501, SC7502, SC7503, ...

Makes it easy to find a disc or track when I know the that information.

When I add music at a later date, I create a folder in the karaoke folder called something like 'Mar07' for the month and year I added the songs. Then I only have to import that folder 'Mar07' to add my new music to RoxBox. When I want to see the music I added, I can search for 'mar07' and I will get just the songs in that folder.

The location of the files is not that important, just as long as they are in a folder other than the root. When you import music in RoxBox, if you select the drive only, then RoxBox will try to open every folder and subfolder looking for music. This causes error when RoxBox hits the Hidden and System folders that XP and Vista put in the root of every drive. As well, you can keep your Karaoke music apart from you DJ music.

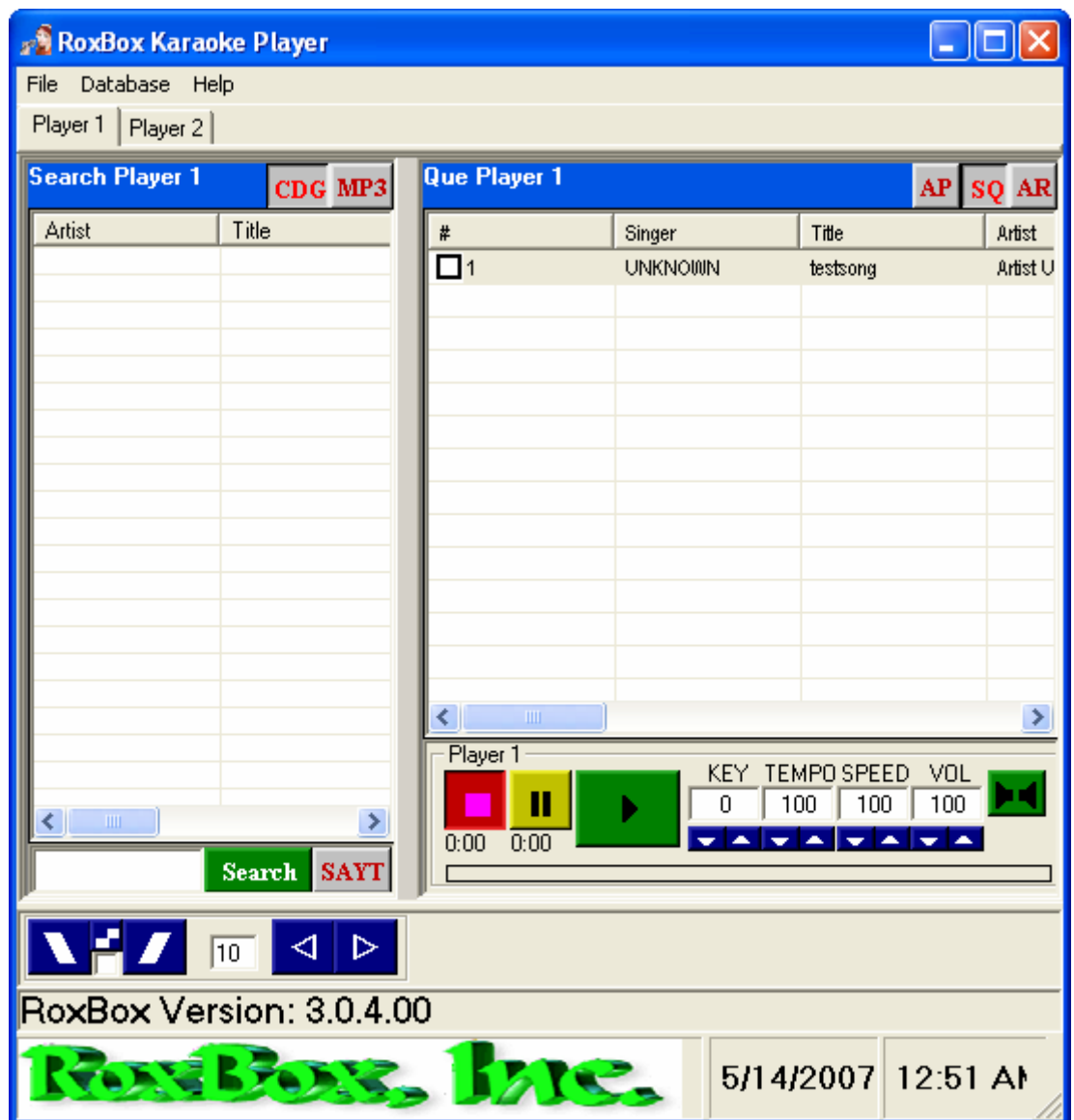


Next is the Naming, select the option that matches the way your karaoke music files are named on your drive. RoxBox uses this so that it knows what part of the files name is the Artist, Title and Disc-track. Select the option of 'MP3' for your DJ music and 'CDG' for you karaoke music. (this only effects what shows in the search when the CDG or MP3 button is pushed on the player screen). Click 'Get Tracks', this will load the list with the information about you music. This may take some time if you have a lot of songs. If the list looks good, click transfer to database, if it does not look good, close the import windows, re open it and start over making sure that the 'Naming' matches your song file name format. After the transfer is done, you can close this window and search for your songs in RoxBox.

Chapter
4

Chapter 4 Playing Your First Song

Playing your first song. Chapter 4 shows you how to play the test song or a song that you imported in chapter 3, and how to setup the CDG (lyrics) screens. The setup of the CDG screens only has to be done once for CDGs.



Playing the TEST Song.

You can play the test song from the website at www.kjamp.com under your downloads if you do not have any songs converted or ripped to you computer. Download the test song and save it to a location on you computer that you can find, like the 'Desktop' or 'My Documents'.

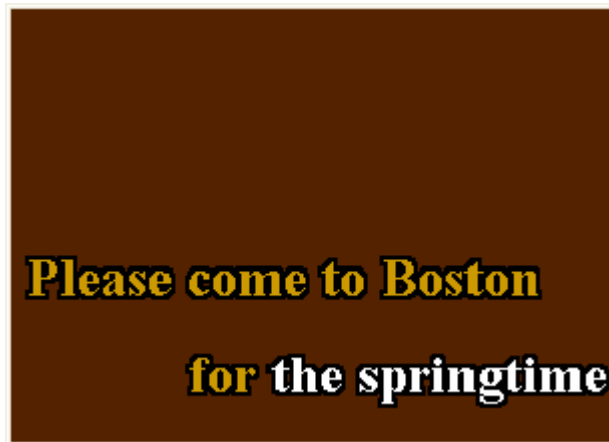
Run RoxBox and 'drag-n-drop' the test song on to the 'Que Player 1' on the right (the list on the right of the player). This will add a singer with the name 'UNKOWN'. Double click the singer or song in 'Que Player 1' and the song will load in winamp and play. You should see two 'CDG' screens (one may be on top of the other). If you do not see any 'CDG' screens, then you will need to enable them as described in chapter 2 and in chapter 9.

If you have songs imported in to RoxBox, then on the left of RoxBox, you can search for a song and double click it to add it to the que on the right.

To play the song, just double click it on the right, this will send it to winamp to be played. You should see one or two CDG screens when the song starts. After about 10 seconds of the song has played, click the 'Pause' button in RoxBox .

Adjusting the CDG screens.

By default, you will have two CDG screens. The first time you play a song, they may be one on top of the other. To view both screens, left click in the center of one of the CDG screen and drag it a little to the right. This should uncover the second CDG screen. NOTE: the second screen may be white or some other color depending on your windows settings, this is ok because the CDG screen does not update the window unless the song is playing. (you can unpause the song for a few seconds to get it to redraw if you want to.



You can left click and drag the CDG screens around your desktop and put them where you want them, they will remember the location that you put them and show back up at that location every time you play a song that is a Karaoke song.

This CDG screen has a 'right-click' menu that has the following options:

1. 1X – Sets the size of the CDG screen to the size in pixels of the CDG graphics (300x216)
2. 2X – Sets the size of the CDG screen to twice the size of the CDG graphics
3. Full Screen – Sets the size of the CDG screen to the size of the monitor that it is on.
4. Always on Top – Set the CDG screen to 'always on top', this tells windows that when this CDG screen is shown, that you want it to be above all other windows. You want this checked
5. Config – Opens a Configuration window for the CDG screen you clicked on. In this config window, you can uncheck the check box at the top 'enable' to hid this window so that it does not show again. To turn it back on, you have to run winamp and follow the instruction in the installation chapter of this manual. The other option on this screen will be explained in chapter 9.

At this point, you have RoxBox installed and working correctly. What you need to do now is setup you second monitor, the one your singers will see, and set the CDG screens and the singers que window where you want them.

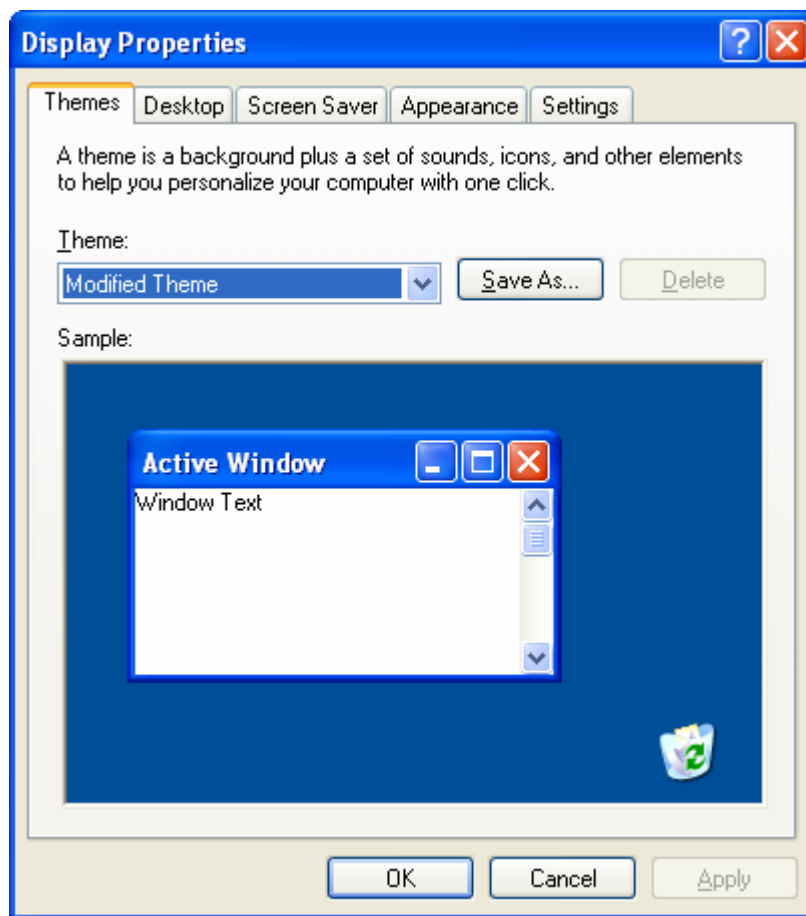
Setting up Dual monitors in windows.

This section is only going to cover a few points and refer you to the Windows Help for setting up Dual Monitors. The reason for this is that each version of windows does not do it the same way.

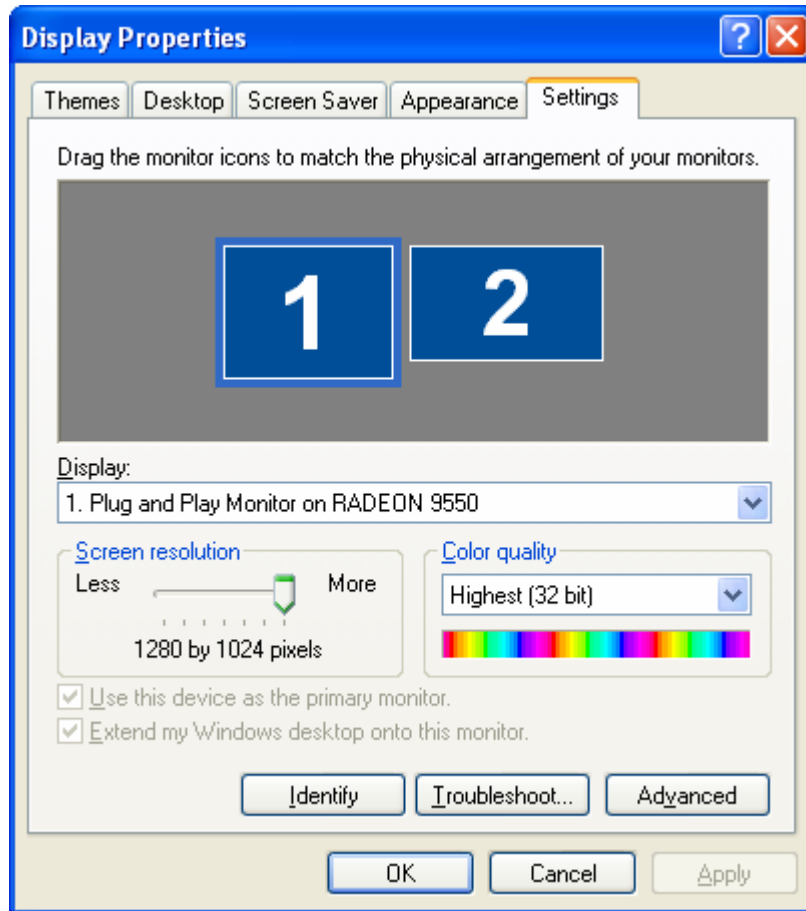
On XP, click start, then help and support, search for 'dual monitors', it will list choices on the left, 'install additional monitors' will be one of the choices. It also includes 'Multiple monitors overview'. Vista and windows 98 should have something close to this.

For XP, you can connect your TV via. The S-Video out on your laptop or video card. If your TV does not have an S-Video in, you can get an RF-modulator from RadioShack for under \$50 that will convert the S-Video out of your computer to channel 3 or 4 of your TV. (some VCRs have a S-Video in that you can use to do the same thing.

Once the TV is connected and on, right click on your windows desktop (not a icon) to bring up a menu. The bottom menu choice is 'Properties', click this and it will bring up a dialog like the one below, or in the control panel, double click the Display icon.



At the top of this window, you see the four tabs, yours may have more depending on your video card. Left click on the settings tab to show the below screen.



NOTE: yours may not look the same as the above, but it will be close.

Left click the number 2 one time, then check the check box 'Extend my Windows desktop onto this monitor.' And click on apply. This should show your windows background image on the TV. Click OK to close this window.

Now you can drag one of the CDG screens off of the right side of you computer screen and it should show up on the TV. Center the CDG screen on the TV and right-click on it to bring up the CDG screen menu. Left click on the option 'full screen'. You should now have one of the CDG screen at full screen on your TV and one that is a little screen on your main monitor.

Unpause the song to continue it playing and see that the screens show the words.

When the song stops, both CDG screens will hide. When you play a song that is a Karaoke song, both screens will show again until the song ends.

If you have trouble with the above, please review the windows help as the information in that help will be more accurate for your system then this manual. This manual is based on My version of windows and video drivers.

If you continue to have trouble getting the Dual Monitors to work, please contact tech support at RoxBox or www.kjamp.com.

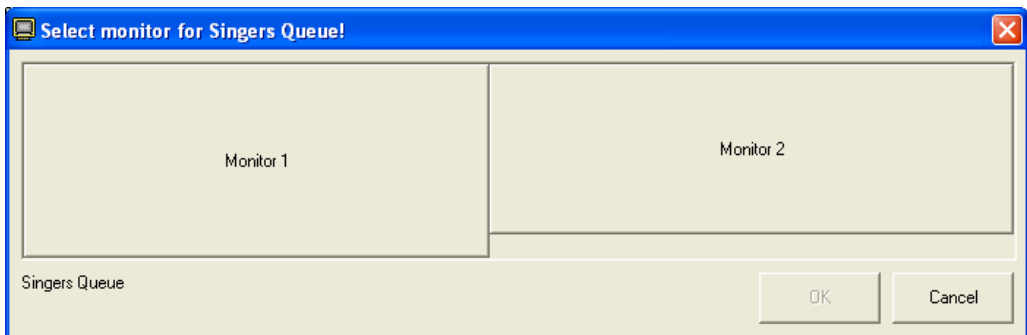
You have a screen that is called the ‘Singers Que’ that on most systems has a blue background and looks something like the below screen shot:

Number	Singer	Song Title
1	UNKNOWN	Please Come To Boston

www.kjamp.com

This screen shows to your singers the next 10 or so singers in rotation. This screen is updated from the information in the Que Player widow on the main RoxBox screen. To show the Que for player one in this screen, you have to have the ‘SQ’ button pushed on player 1. if you do not want this screen to show between songs on the TV. You can set it to monitor 1 and it will hide.

To show this screen on the TV, click ‘file’, ‘set screens’ in the RoxBox menu. The below dialog will show:

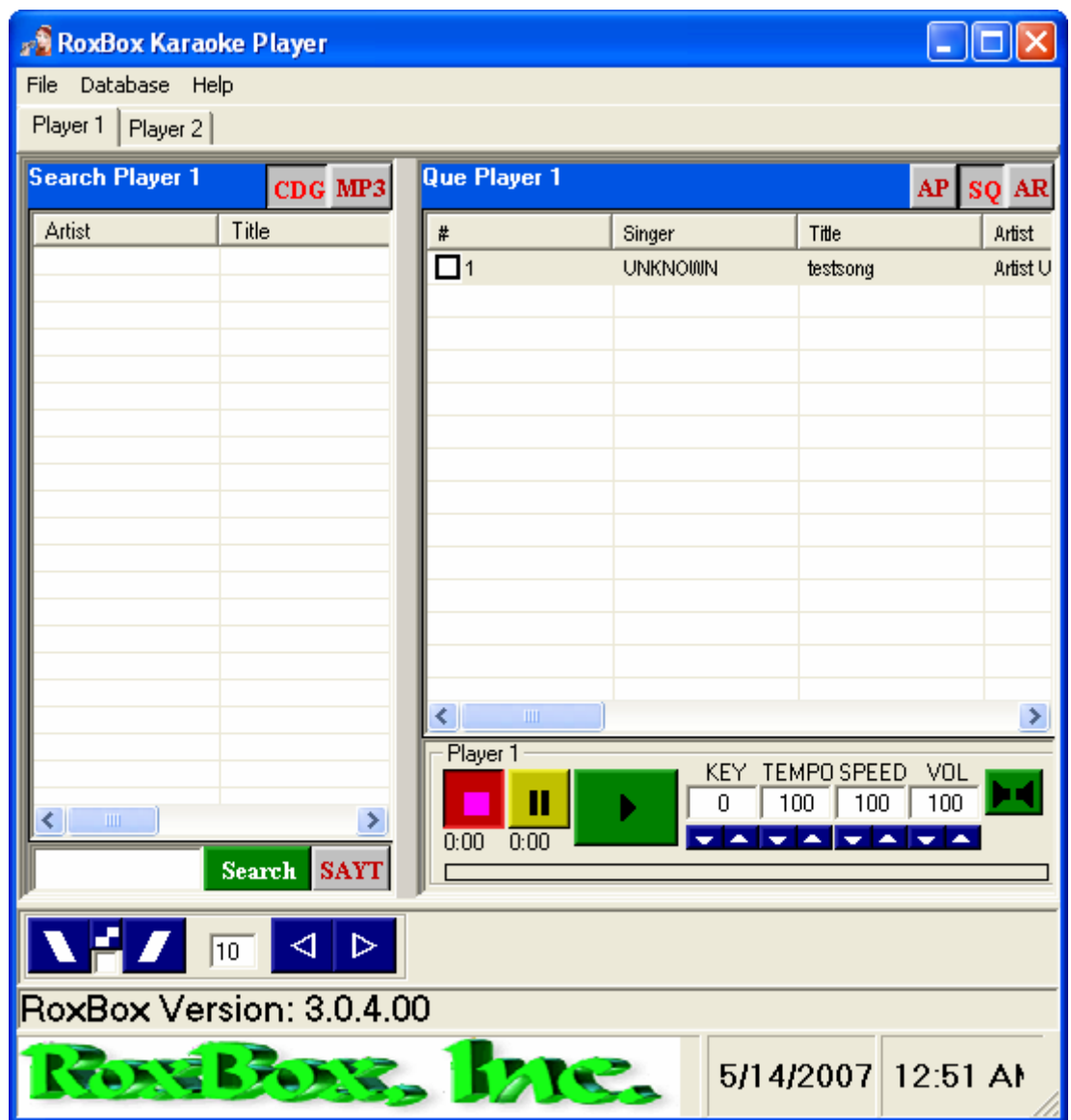


Click on 'Monitor 2' and then click on 'OK', this will send the Singers Que screen to the TV and set it to full screen. If you click 'Monitor 1' and click 'OK', this will send it to monitor 1 and hide it.

The text at the bottom of the 'Singers Que', above it shows 'www.roxbox.net', can be changed using the RoxBox menu 'file', 'set text'.

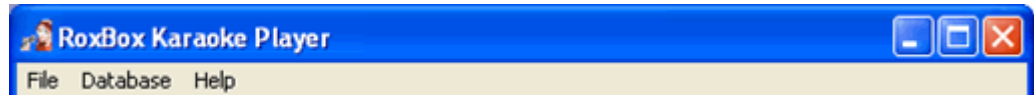
What do all of the buttons do?

Using the image below, this section will give a description of what each item in RoxBox is and the way it works.



This is the full RoxBox screen adjusted to fit this document. As you can see from the image, the RoxBox screen is divided into sections. At the top you have the windows title bar that has the icon of the singing girl, the title of the program 'RoxBox Karaoke Player' and the three windows buttons. This title bar can be used to move the window around, and the buttons can be used to minimize, maximize and close the window.

Below the singing girl and the title 'RoxBox Karaoke Player' is the RoxBox menu, 'File', 'Database', and 'Help'.



The File Menu

The file menu has the following sub items

Open ini file

This opens the RoxBox Karaoke Player INI file in Notepad and allows you to edit setting. Please refer to Appendix A for information about what the values in this file are used for.

Open App Data Folder

This opens the 'Data Folder' that RoxBox uses to store the INI file, your songlist database file, and other files that RoxBox needs to be able to open and edit. The location of this folder depends on your version of Windows and it is a hidden folder.

Clear Picture and Set Picture

The Clear and Set Picture items can be used to set and clear a picture in the 'blue area' of the singers que screen that the singers see between songs.

Toggle Text/Next Singer

This allows you to change the behavior of the text area at the bottom of the 'blue singers que', the default behavior is to show the text 'www.roxbox.net'. This area will show the name of the next singer or the text that is set using the next menu item.

Set Text

This menu item allows you to change the text at the bottom of the 'blue singers que', the default text is 'www.roxbox.net'.

Set Screens

This menu item will show a dialog that has a representation of your monitors, by clicking on one of the monitors and then clicking on 'OK', you can send the 'blue singers que' to the second monitor or hide it by sending it to the first monitor.

Record All Player 1

If this item is checked, RoxBox will automatically check the 'Record' option for every singer you add to the singers que or 'que player' list for player 1. NOTE: the check box that this sets is the same 'Record' check box that you see when you edit a singer.

Record All Player 2

This is the same as the above only for player 2.

The Database Menu

The Database menu has the following sub items

Select

By default, RoxBox opens the 'songlist.mdb' file in the 'app data' folder or the last database you selected if you selected one. You can use this option to select other databases that you created using the next menu item 'Create'.

RoxBox allows you to have mutable databases, you could have one for each venue that you do shows at. Then select the database that matches the venue, this would keep you singer history for each location in its own database and would prevent the songs that Bob at venue1 sings from being in the singer history that Bob at venue2 sings.

Each database you create has to be selected for you to use it, and each database has to have the music imported in to it (you can only have one database selected at a time). If you have three venues that you are going to run shows at, and you want each to have its own database. You can import your music in to the default 'songlist' database and then using the 'File', 'Open App Data Folder' to open explorer to the folder that the songlist database is in. copy the songlist database and rename the copies to the venues you want. This will save you from having to import your songs for each venue.

Create

Creates a blank database using the name you give in the text box. This allows you to create a database for each venue if you want to.

Import

Import songs to your database, this is covered in the installation chapter.

Export

This menu item allows you to export the song list of the Karaoke (CDG) table that is in the currently selected database. The HTML option does not work and will be fixed or added later. The location of this exported file is the 'App Data' folder and the name of the file is export.txt. This export.txt file is an ascii delimited file that can be imported in to Excel or other programs that can import ascii delimited files.

Edit Karaoke Tracks

Currently this allows you to edit the entries in you Karaoke (CDG) table, changing the data in the TrackPath column will cause that song to not play unless you change the song file on your drive to match. The other fields will only change the way it is displayed in the search and playlist, but will not change what the search return. Example : if you change the aritsname, and then search for the new artist name, it will not find it, the search only searches in the trackpath field. The way this works may change in future versions of RoxBox.

Repair

The Database Repair can be used to repair a damaged database, depending on what has append to it. This option is also used to upgrade your database to the current version.

Clear MP3

Clear MP3 will clear the information stored in the database related to the songs you imported if you imported them with the MP3 option.

Clear Karaoke

Clear Karaoke will clear the information stored in the database related to the songs you imported if you imported them with the CDG option.

The Help Menu

The Help menu has the following sub items

About

Just shows the about box that has the RoxBox Version information and copyright notice.

RoxBox Help

Currently not working

Register

This brings up the Registration window that you seen in chapter 3.

Search player 1

This area of the RoxBox window is used to search for songs and allows you to add them to the player que.



Starting at the top, you have the title 'Search Player 1', to the right of that you have two buttons. What the two buttons do is tell roxbox what table you want to search. If you have the CDG button pushed in, the search will look in the table that you imported your karaoke music in to, if the MP3 button is pushed in, then the search will be in the music you imported in as MP3. You can search CDG or MP3 during a show and add songs from both to the current play list and play the songs from the 'Que Player 1' list. This allows you to put dance songs in with your singers and just play the dance song as if it was a singer.

The list has six columns, Artist, Title, Disc, Track, FilePath, and Match. You can only see four of them above, but if you drag the scroll bar at the bottom of the list, it would show the other two. You can left click on the column title to sort by that column. Artist is the artist of the song, Title is the title of the song, Disk and Track of the song. FilePath is the location and filename of the song file on your drive. Match is how close this item matches what you searched for, the larger the number the better the match. Remember that the search only looks at the FilePath to find what your looking for.

At the bottom you have a text area and two buttons. The text area is where you type what you want to search for. You can hit enter or click the search button to have the list show your matches. The SAYT stands for Search As You Type, and if it is in, then RoxBox will start looking for matches after you have entered 3 or more characters in the search text box. Both search and SAYT have built in limits that you can change in the ini file. Search has a limit of 500 and SAYT has a limit of 50. this limit is the max number of matches that it will return.

Once you find the song you want, you have a few ways to get the song or songs to the Que Player 1 list or the singers list.

You can double click a song in the search list to add it to the play list with a singers name of UNKNOWN. You can right click on the song and you get a menu that allows you to select 'new singer', 'new singer with own cd', 'mark song file as bad', 'add selected', and the rest is the singers names you have in the play list at the time you right click.

New Singer will open a dialog box that allows you to put in the singers name and the key that the singer wants for this song, as well as other setting like 'Record'. Click ok on the dialog and it will add the singer to the play list on the right with the information you enter.

New Singer with own cd allows you to quickly add a sing to the play list without a song, it puts the title of the song as 'Own CD', this works as a place holder for singers that have a CD and allows you to have them in the rotation or Play list.

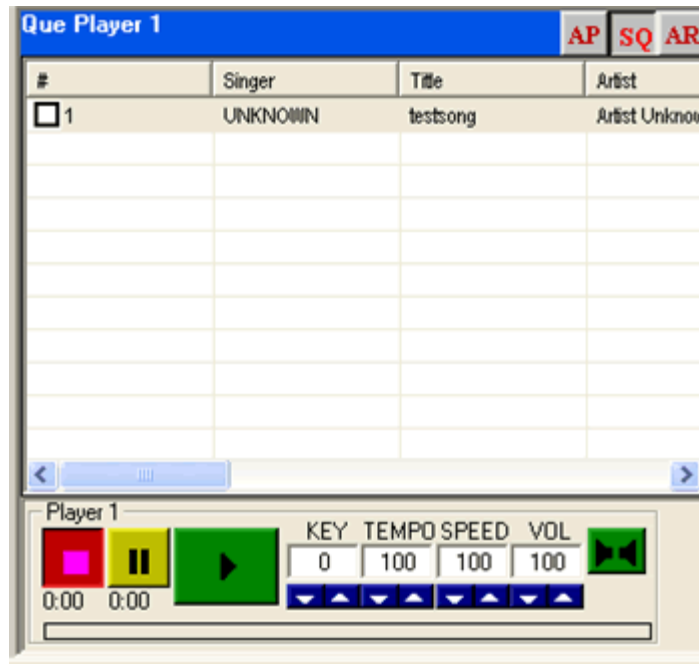
Mark Song File Bad will mark the song in the database as bad, this way it will not show up in search results any more. It also moves the song file on your drive to a folder called 'Badsongs' in the root of the drive the song file is on.

Add selected will add all the songs you have highlighted on the left to the play list on the right.

If you click on one of the singer names in this menu, it will replace that singers song on the right, with the one you selected on the left.

Que player 1 (or Play list)

This area of the RoxBox screen is your rotation. You can drag and drop the singers to move them around the list, you have a right click menu that has a lot of options, and you have the player controls at the bottom.



At the top, you have the title of this area and the three buttons ‘AP’, ‘SQ’, and ‘AR’.

AP stands for Auto Play and will cause the player to start the next song when the current song is done. SQ stands for Show in Que, this shows the singers in this list on that ‘Blue screen’ that the singers see between songs. AR stands for Auto Remove and will if pushed in, will cause every song or singer in the list that has the check box checked to be removed from the list 15 seconds after a song starts. The 15 seconds can be changed in the ini file.

The list of singers and songs have a check box in the first column and this check box has two purposes, the first is simply to let you know that the singer has sung that song and you have not changed or edited it sense you played it. The second is if you have the ‘AR’ button pushed, any singer in the list with the check box checked will be removed from the list 15 seconds after play a song. When you play a song, the singer and song move to the bottom and the check mark gets set.

The way this list work in general is that when you add a singer, that singer is added to the bottom of the list, when you play a song, that song and singer is moved to the bottom of the list. this way, the top item of the list is the next singer. If you double click a singer in the middle of the list, that singers song will play and the singer will be moved to the bottom of the list and a check will be put in from of the singer to let you know that this singer has sung this song.

You can drag a singer up or down in the list and drop them on top of the singer you want them to go in front of.

This list can be large if you want it to be, it can hold over 30,000 singers, not that you would ever load it that full.

The 'right-click' menu for this list has the following options.

Singer List

This list all of the singer names you have in your singer history, when you click on one of them, it will put that singer in the list as 'own-cd' and then open up the singer history for that singer. You can pick a song from the singer history and it will replace the 'Own-cd' with the song you select.

Singer History

This will open up the singer history list that has all of the songs that this singer has ever sung at your show. You can double click one to set that song as the singers current song.

Comp

This menu option is for creating BIN files that you can burn to CD to take to other shows that you want to sing at. It will create a folder in the App Data folder called 'Comp' and in that Comp folder it will create a folder that is the same as the singers name of the first singer in the list. if this singer is UNKNOWN, then it will create a folder called 'UNKNOWN' and create BIN files for all of the songs in the play list. Please make sure that you do not have any singers in the list with 'own-cd' as this may cause errors. All of the items in the list will be cleared. You can use a program like CDRWIN to burn the BIN files to a CD.

Move Selected to Top

This will move the selected singer to the top of the list.

Find Like Song

This will take the title and artist of the song you right-clicked on, and search for it on the left. This is good if you find that the song you currently have in the play list is bad or named wrong. You can quickly find all of the songs with the same title and artist.

New Singer with Own CD

This add an entry for a singer with 'Own CD', this is good for a place holder for a singer that has his or her own CD. It also works well for putting singers in quickly and then come back and find the songs for each singer in that singers history or via. The search on the right.

Own CD

If you have a singer in the list that has a song selected, and they bring you a CD, you can change this singers entry to 'Own Cd' and it will remove the check mark.

Edit

This brings up the singer edit dialog, here you can change the singer name, key for this song, check or uncheck if you want to record this song.

Save Play List

This will open a 'file save' dialog and allows you to save the current play list to a file so that you can later load it.

Load Play List

This will open a 'file open' dialog and allows you to open a previously saved play list.

*Append Play List (player 2 only)

This works like Load Play List only it adds the new list to the bottom of the old list.

Remove

This will remove all selected singers from the play list.

Clear All

This will remove all singers from the play list

Uncheck All

This will uncheck all of the singer in the play list

Mark Bad

This marks the file as bad in the database and move the song file to the badsongs folder on the drive the song is on.

The next part of this section is the Player controls. This includes the Stop, Pause, and Play buttons and the other buttons to the right of the Play button.



The first button is the Stop button and does just that, it stops the currently playing song if this play is playing a song.

The next button is the pause button and it does just that, it pauses the currently playing song, if the song is paused, then this un pauses it.

The Play button has a few features to it that you need to know about. First it works just like you would think it would when you press it and no songs are playing, it plays the selected song from the Play List. But, if a song is playing, it restarts that same song. This is for when your singer was not ready or missed the cue for the song and wants you to 'Start it over'.

The Best way to play a song is to double click it in the play list, that way you know it is going to play the correct song. The Play button will play the last song selected and may not be the song you wanted to play.

RoxBox allows you to change the key of the song for your singers, the key up and down buttons does this for you only after the song has started. To change the key before you start the song, enter the key value in the edit singer screen you see when you add a new singer or edit a current singer. This key value is reset to the value stored in the edit singer window when you play a song.

The Tempo and Speed do not reset for each song and will stay at what you set them to. 100 is normal for both the Tempo and Speed.

Vol is the volume that you want this players winamp to be set at and it has a range of 0 to 255. when you play a song, this sets winamp to this volume level. When fading from player to player, this value is also used. (more about fading later).

The button to the right of the VOL, is the MPX button. It will remove the vocals on tracks that have the vocals on one channel and not on the other. You will continue to hear the music out both sides of your amps.

Below the pause and stop buttons is the time left in the song and the time from the end of the song. Also you have a progress bar that shows your location in the song. When you hit the fade point of the song, (more later about fading) it will start to flash.

The Fade Buttons

This area has the Fade buttons and is below your search area.



From left to right you have 'toggle fade to player 1', 'toggle auto fade on/off', below this is a check box that if for random play, then 'toggle fade to player 2', the text box with 10 in it is the number of seconds from the end of the song that the fade will start. The last two buttons are 'fade now to player 1' and 'fade now to player 2'.

The most common setting is to have the 'toggle fade to player 2' and the AP button on player 2 pushed in with songs you want to play between singers in player 2. This will autofade to player 2 when the karaoke song in player 1 is done.

Chapter 5 Running a Sample Show

Running a sample show. Chapter 5 covers most of the other operations that you will need to know to run a smooth Karaoke Show. This chapter includes the settings needed to use RoxBox for the following type of shows: Section 1) Basic Karaoke Show with no background music or singer list for the singers. Section 2) Add the singer list for your singers to see and adds background music between your singers with auto fade.

Basic Karaoke Show.

This is the basic show to get you started. It is assumed that from here on out, you have read the previous chapters and have your music imported in and your screens setup to do a show.

NOTE: If you play a song and RoxBox acts like it is going to play it but does not, this almost always means that your drive that has your music is not hooked up or turned on. If it is hooked up and turned on, windows did not see it or seen it as a different drive letter then it was when you imported your music. You will have to check and correct this before you can play music. (see the how to correct drive letters in the appendix)

When you Run RoxBox, it should load with the last play list you had and a blank search area. Your singers start to bring you song slips and you need to start putting them in and get the show started at the same time.

I would put the first two singers in and get them singing and then add the other singers. First find the song the first singer wants to sing and right click it, Select new singer, this brings up the 'Edit singer screen', enter the singers name and key if the singer wants to change the key. Hit enter or click ok to add the singer to the playlist on the right. Now you can call that singer up and double click the singers song on the left to get it started. While that singer is singing, add the second singer and any other singers you can before he or she is done.

You will have to drag the current singer below the other singers as adding new singers put them at the bottom and this would be after the current singers next song.

You have a few choices as to the way you want to run your show, you can have RoxBox remove the singer from the list after you play that singers song by having the 'AR' button pushed in above the play list. This will remove any singer that has a check

mark 15 seconds after you play a song. Or you can leave them in the list and keep that spot in rotation, this gives them time to look for another song or you time to enter the next song for them. To put in the singers next song after they sing the current one, you can search for the song on the left, right click the song and select the singers name from the menu. This will replace the old song with this new one and uncheck it.

If this was your third or fourth show, and you have the same singer wanting to sing a song that they sang the other night, you could right click on the singers name on the right and select 'singer history', this will list all the songs that singers by that singers name have sung at your show. You could then pick the song from the singers history by double clicking it, this again will bring up the 'edit singers' screen and allow you to change the key or singers name.

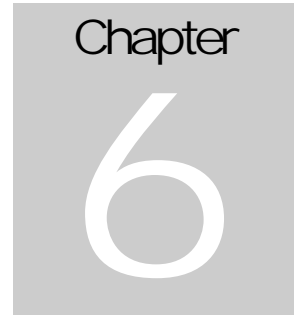
You should be off and running.

Singer list for your Singers to see and Background Music

This is the same as the above except you are going to add background music to player 2 and set the 'Singers Que' window to show on the singers screen.

First, to set the singers que to the TV, select 'file', 'set screens' and left click the 'monitor 2' button, then click ok. This will show and send the 'blue' singers screen to the TV. Now on player 1, push the 'SQ' button, this tells RoxBox to show the player 1 list in the singers que list. Now select player 2 and add the music you would like to have for your background music to the play list. I would not use karaoke music as this will cause the CDG screens to come up for player 2 and this is not what you want. After you get the songs you want in player 2, push the AP button on player 2 and press the third button from the left at the bottom of RoxBox, 'auto fade to player 2'. Switch back to player 1 and you are ready to go. As you enter singers you will see them show up on the TV too. When you play a song in player 1 and it gets within 10 seconds of the end of the song, you will see that RoxBox will start player 2 and bring the volume of player 2 up and the volume of player 1 down. RoxBox will continue to play songs from player 2 until you start the next song from player 1. When you start the next Karaoke song in player 1, RoxBox will start it with the volume down and then start bring it up on player 1 and down on player 2, then it stops player 2.

This process repeats the rest of the night.



Chapter 6 Protecting Your Music

Protecting your Music. Chapter 6 covers the Encryption of your music files to prevent someone from stealing them and maybe even your show. This chapter explains what happens to the files when encrypted, to show you what level of protection you have when using it. “Warning” RoxBox or Frank H. Crowder or any employee of RoxBox will not decrypt any files encrypted using the Encryption program included with RoxBox for anyone for any reason! In fact, we can not decrypt the files unless they are on the computer that they were encrypted on to start with. If you own the songs, you should have a backup of them that is NOT encrypted. This is the only way to make sure that someone does not steal your music and then contact RoxBox and claim the songs belong to them. The music is encrypted in a way that if you change the computer or parts of the computer that the songs are encrypted to, your songs will no longer work.

Again, do not do this with your only copy of your music!

NOTE: KJzip2kje only works with zip files, this will not protect any files that are not in zip format.

In the RoxBox Karaoke Player folder at ‘c:\program files\roxbox\karaokeplayer\’ you will find a program called kjzip2kje.exe. This little program will encrypt your song files in one of two ways.

You will have to re import your songs in to RoxBox after you encrypt them as the file names change.

Encryption method 1. KJE files, this method uses a key that it creates from information about your computer mother board and local hard drive. KJE files can only be played on the computer that was used to encrypt them and only by RoxBox.

Encryption method 2. KJA files, this method uses a key that it creates from the drive that the music is on. It will play in RoxBox on any computer as long as it is on the drive it was encrypted on.

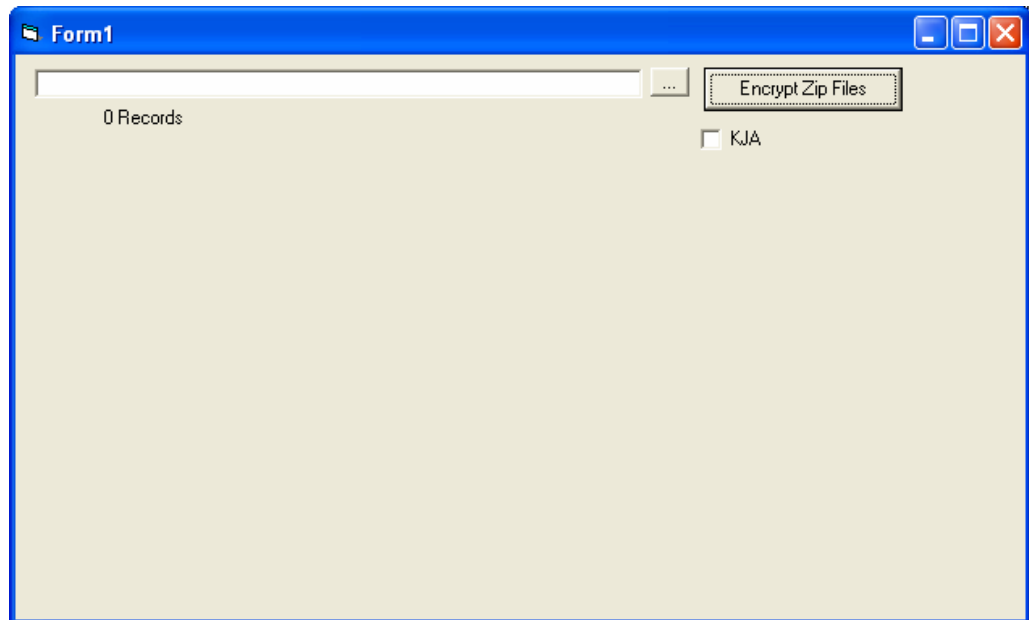
Why create two file types? One is more secure than the other but the other is more flexible. You will need to decide what one is best for you if you want to encrypt your files.

Method 1 KJE, if you have your files encrypted with this format, some one would have to take the computer with your music in order to be able to play the music. If the computer ever dies, the music would be no good as well. You can make all the copies of the drive you want for backups, and use them on that computer, just not on other computers.

Method 2 KJA, this format only locks them to the drive, if someone takes your drive, then they can plug it in to a computer that has RoxBox and they will play. If the songs are moved to a new drive, they will not play. This allows you to move the drive from computer to computer and prevents someone for making a copy of the songs and using them someplace else.

Now that you know what it does and how it works, lets get to the program that encrypts your files for you.

KJzip2kje.exe



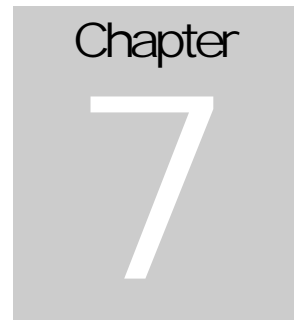
Just like in the RoxBox import, click the button with the three dots ‘...’ and select the folder that has your music in it. Now if you want method 1 KJE for your encryption, just click the ‘encrypt zip files’ button and it will start. It will show a count as well as show the current file below the count while it is working. When the count gets to the number of songs you have it should stop counting. At this point it should be done, but it does not tell you that it is done. If you want method 2 KJA for your encryption, the check the KJA check box before you click on the ‘encrypt zip files’ button. It acts just like the KJE in that it will count the files and show the current file as it works.

When this is done, you will have to clear the karaoke database and import your karaoke music in to RoxBox again.

Currently, a few flaws exist that could allow someone to get the songs at about a rate of 2 songs per minute; this would be 120 songs an hour. They would not be able to do this during a show and would have to figure out how to do it to begin with. They would have to have the computer to do this with the KJE files and would have to have the drive to do this with the KJA files. In a future version of RoxBox that does not use winamp, this flaw can be removed.

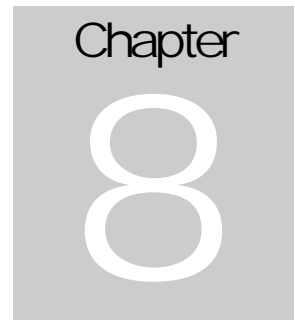
If you do not want your DJs or KJs running this encryption program, please remove it from the install folder 'c:\program files\roxbox\karaokeplayer\'', just delete it.

Again, do not run this program if this is your only copy of your music.



Chapter 7 Song Books

Song Books. Chapter 7 WILL have information about creating songbooks with RoxBox.. Currently the songbook part of RoxBox is getting an overhaul and will be included when it is completed.



Chapter 8 Singer Record

Singer Record. Chapter 8 WILL have information about recording your singers. Currently the recording part of RoxBox is getting an overhaul and will be included when it is completed.